

이현민

Juxtaposition of Macro Cosmos

TECHRIDER

- **Contact** : nixony0303@gmail.com
www.instagram.com/nixony
- **Team name** : 이현민
- **Program name** : Juxtaposition of Macro
Cosmos
- **Member**
 - Direct/Composition/Video : 이현민
 - Viola : 라세원
 - Dance : 최지원, 민경원, 전해정

- Stage design is very important.

Please make sure to discuss the parts that can be produced and prepared in advance.

- The stage set height is not less than 7m, so it must be a high height stage and the truss and hoist can be secured to the upper set baton or structure.
- The upper parts are used to secure the set that encloses the player.
- When stage set-up and strike, we need someone to supervise the stage.
- Please refer to the attached drawing for lighting design and setup.

1. Sound System

- Should be main speaker is prepared 3way or 4way line–array system and need seven delay speakers.
- Need good condition sound system like D&B, L–Acoustic, Meyer and ETC.
- Delay speakers should be least 12inchs and must be the same manufacturer.
- Delay speakers should be driven independent Aux–Out or Matrix and we want point–source.
- Sub–Woofer should be driven independent Aux–Out or Matrix.
- Artist use Wireless IEM.
- We need 16ch multicable to and form the console and audio interface.

2. Mixing Board System

- Good condition Yamaha CL or QL Series.

- (If it is impossible to prepare Yamaha Series)

Midas M32 with stage rack on the stage or Multichannel box.

- Yamaha O1V96, LS9, Allen&Heath Qu and low grade console, analog console is not allowed.

3. Microphones

wireless	Wireless Bodypack / Shure, Sennheiser	1ea
	Shure PSM1000 W/L IEM with In-Ear	1ea
	DPA 4099	1ea
	DPA DAD6010 / Shure adaptor	1ea

4. Input Mic Channel

CH No.	Inst.	Microphone	Stand/Remark
1	Audio Interface 1	TRS Out	–
2	Audio Interface 2	–	–
3	Audio Interface 3	–	–
4	Audio Interface 4	–	–
5	Audio Interface 5	–	–
6	Audio Interface 6	–	–
7	Audio Interface 7	–	–
8	Audio Interface 8	–	–
9	Audio Interface 9	–	–
10	Audio Interface 10	–	–
11	Audio Interface 11	–	–
12	Audio Interface 12	–	–
13	Audio Interface 13	–	–
14	Audio Interface 14	–	–
15	Audio Interface 15	–	–
16	Va	DPA 4099 W/L	–

5. Output Mic Channel

Output	Name	Remark
Aux 1	IEM Monitor	-
Aux 2	Send tio Latop	-
Matrix 1	Delay LLL	-
Matrix 2	Delay LL	-
Matrix 3	Delay L	-
Matrix 4	Center	-
Matrix 5	Delay R	-
Matrix 6	Delay RR	-
Matrix 7	Delay RRR	-
Aux 7	Sub 1	
Aux 8	Sub 2	
Main L	Main L	
Main R	Main R	

– Lighting equipment suitable for the following request spacks is required.

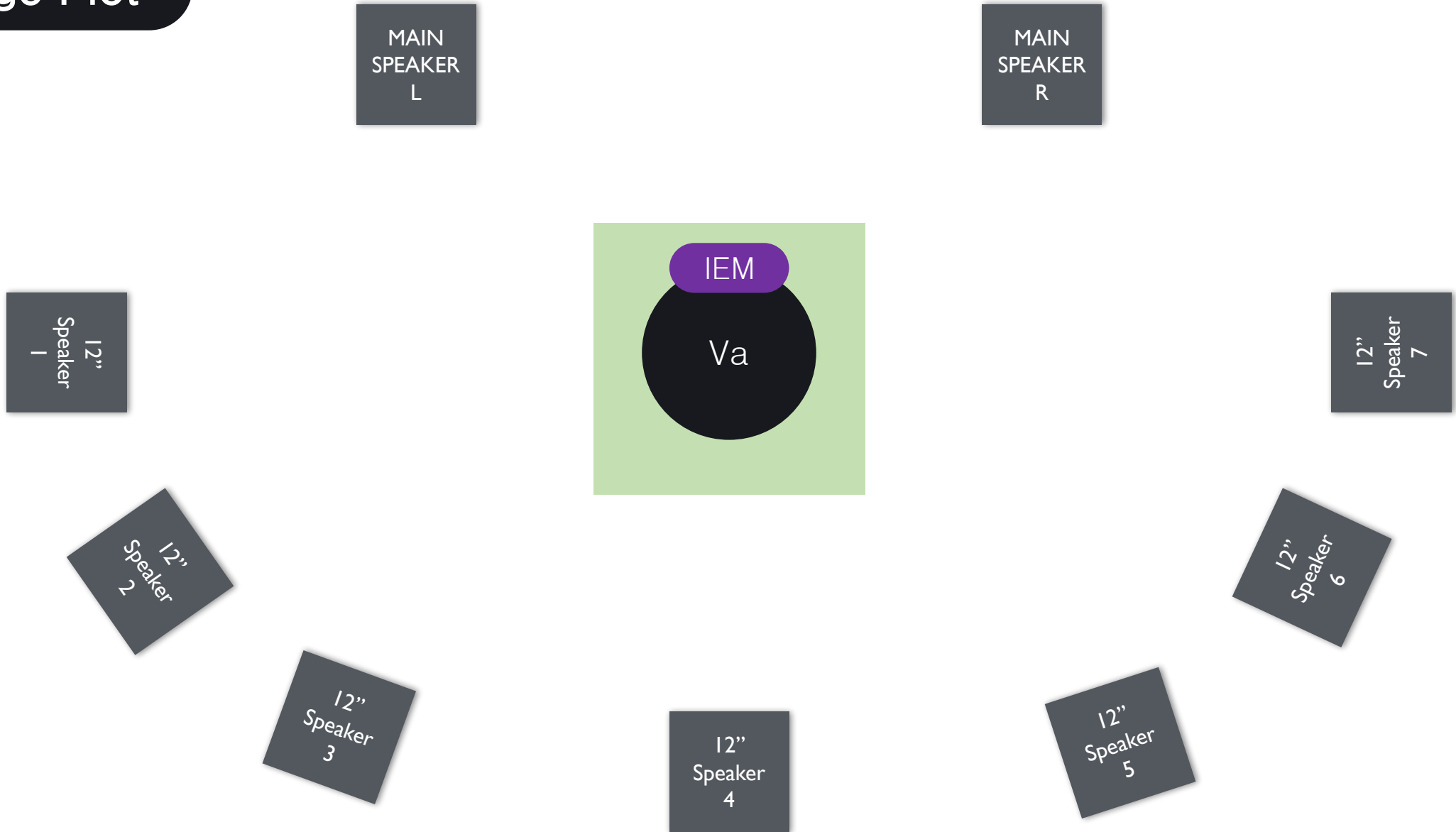
If it is difficult to prepare, please make sure to consult in advance.

– Please refer to the attached drawing for lighting design and setup.

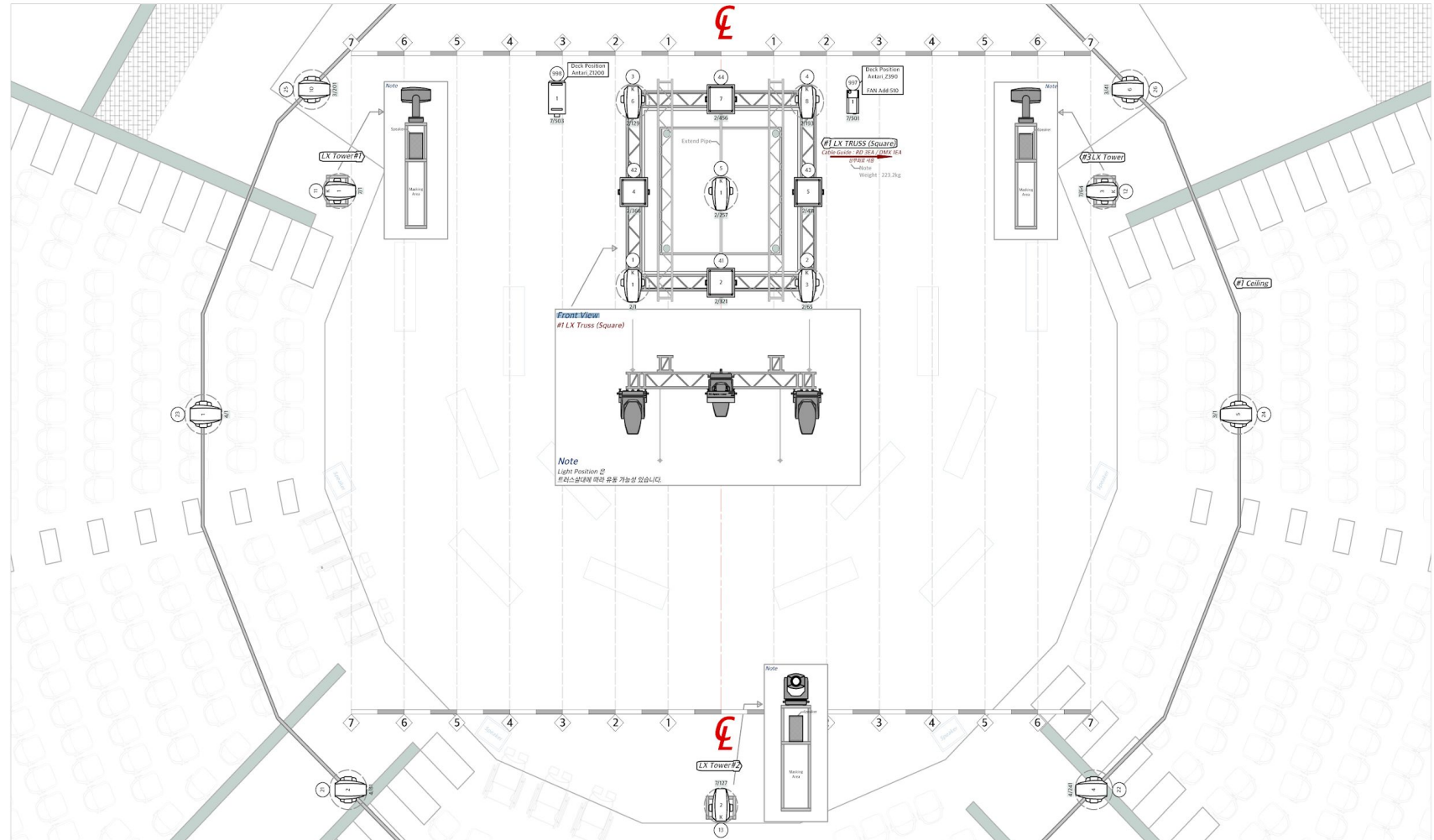
light	Grand MA2 or 3 Light	1ea
	Bari, Elation or Ayrton or Claypaky Moving Spotlight Up to 1400w Spot light	10ea
	Bari, Elation or Ayrton or Claypaky Moving Spotlight Up to 1200w Spot light	8ea
	MinuitUne IVL Carre Light	4ea
	Antari Fog & Hazer Machine	2ea
	DMX Control Fan	1ea

*We need spare for all without MA console.

Stage Plot

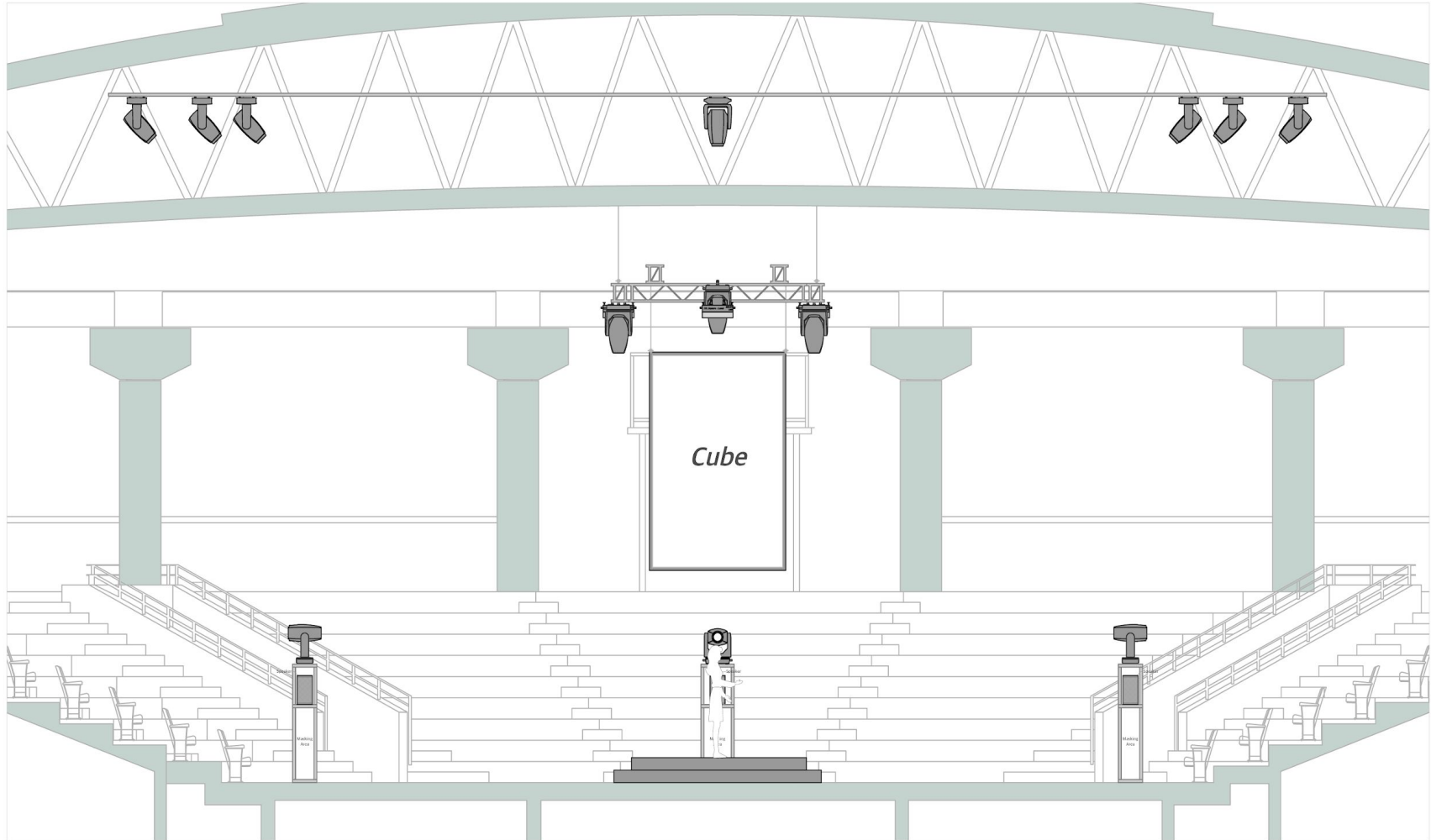


Lighting Drawing



<p>Light</p> <p>MinuitOne_IVL Carre 125W_4EA (99.9kg)</p> <p>Elation_Monet Profile 1400W_10EA (42.8kg)</p> <p>Ayrton_Khamsin Profile 1150W_8EA (99.8kg)</p>	<p>KEY</p> <p>Moving Light</p> <p>Device</p> <p>Antari_Z1200 @1300W_1EA</p> <p>Antari_Z390 Fazer @1450W_1EA</p>	<p>LEGEND</p> <p>Barn Door Color Purpose Iris Template Unit Number Channel Port:Address</p> <p>Fixture</p>	<p>NOTE</p> <ul style="list-style-type: none"> - 안전에 유의하여 작업 부탁드립니다. - 트러스의 하중은 조정장비 하중만 계산되었습니다. - Monet Profile은 극장 상부 기본 셋업되어있는 라이트를 사용합니다. 또한 Address 는 현장셋팅 컨디션을 유지합니다. - IVL Carre : Mode 2 (45ch) - Khamsin_Profile : Extended Mode 	<p>국립극장 하늘극장 서울 중구 장충대로 59 하늘극장</p>	<p>LIGHTING DESIGNER 이상민 ison54@naver.com 010-3353-1273</p> <p>DIRECTED BY TECHNICAL DIRECTED BY SET DESIGNED BY SOUND DESIGNED BY</p> <p>이현민 이현수 이희정 최우영</p> <p>SCALE NONE SCALE DWG. 1 OF 4</p> <p>SHOWING DATE 2022.12.16-17 SET-UP DATE 2022.12.13-15 REV. 2022.12.05</p> <p>DRAFTED BY 이상민</p> <p>LIGHTING PLOT Top-View</p>
--	--	---	--	---	---

Lighting Drawing

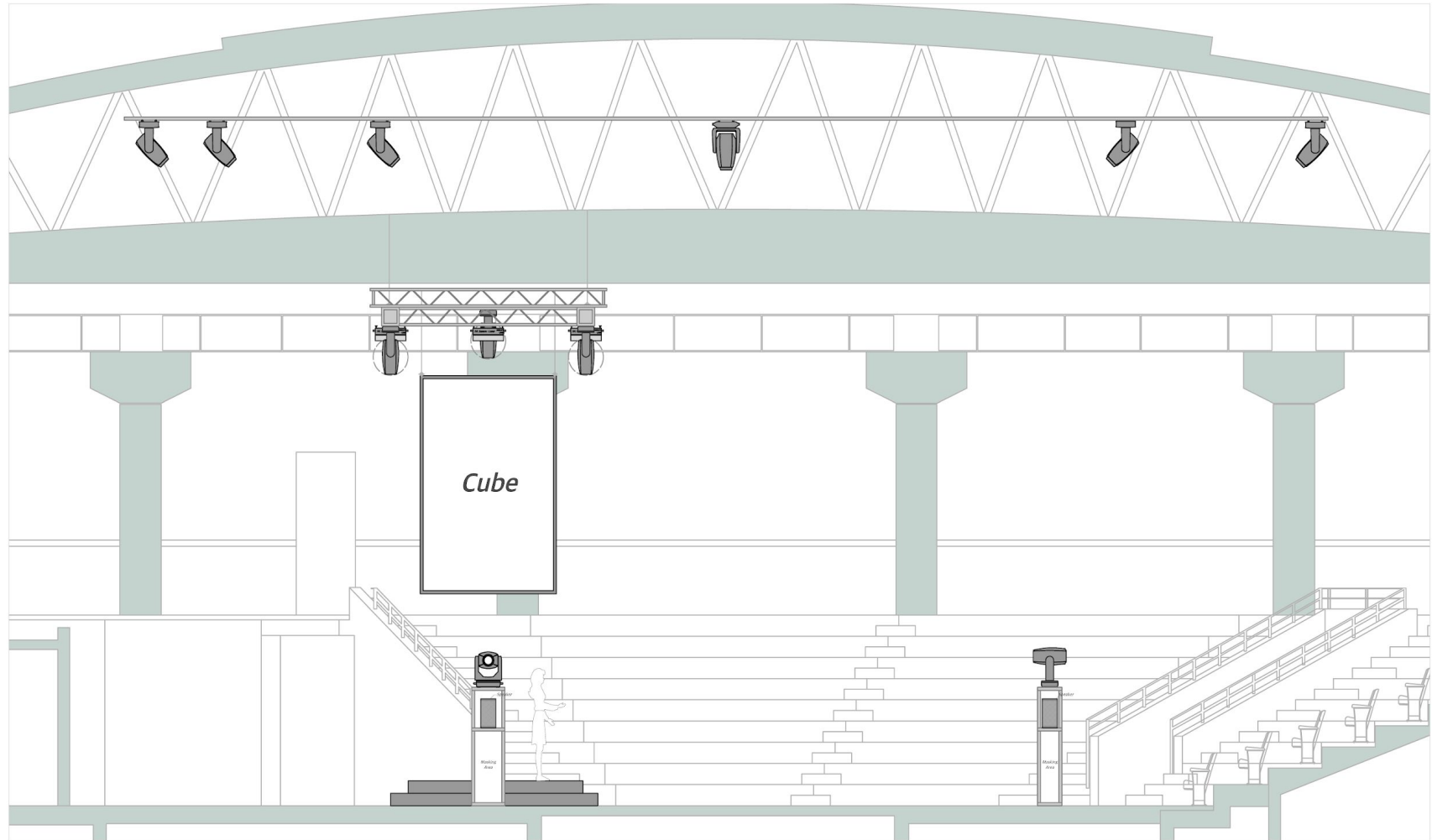


<p>Light</p> <p>MinuitUne_IVL Carre 125W_4EA (19kg)</p>	<p>KEY</p> <p><i>Moving Light</i></p> <p>Elaton_Monet Profile 1400W_10EA (42.0kg)</p> <p>Ayrton_Khamsin Profile 1150W_8EA (39.8kg)</p>	<p>Device</p> <p>Antari_Z1200 @1300W_1EA</p> <p>Antari_Z390 Fazer @1450W_1EA</p>	<p>LEGEND</p> <p>Barn Door Color Purpose Iris Template Unit Number</p> <p>Channel</p> <p>Port:Address</p> <p>Fixture</p>	<p>NOTE</p> <ul style="list-style-type: none"> - 안전에 유의하여 작업 부탁드립니다. - 트러스의 하중은 조명장비 하중만 계산되었습니다. - Monet Profile은 극장 상부 기본 셋업되어있는 라이트를 사용합니다. 또한 Address 는 현장셋팅 컨디션을 유지합니다. - IVL Carre : Mode 2 (45ch) - Khamsin_Profile : Extended Mode 	<p>LIGHTING DESIGNER 이상민 lum546@naver.com 010-3353-1273</p> <p>DIRECTED BY TECHNICAL DIRECTED BY SET DESIGNED BY SOUND DESIGNED BY</p> <p>SCALE NONE SCALE DWG. SHOWING DATE 2022.12.16-17 SET-UP DATE 2022.12.13-15 REV. 2022.12.05 DRAFTED BY 이상민</p> <p>이상민 최원수 신낙경 최원녕</p> <p>2 OF 4</p> <p>LIGHTING PLOT Front</p>
--	---	---	---	--	--



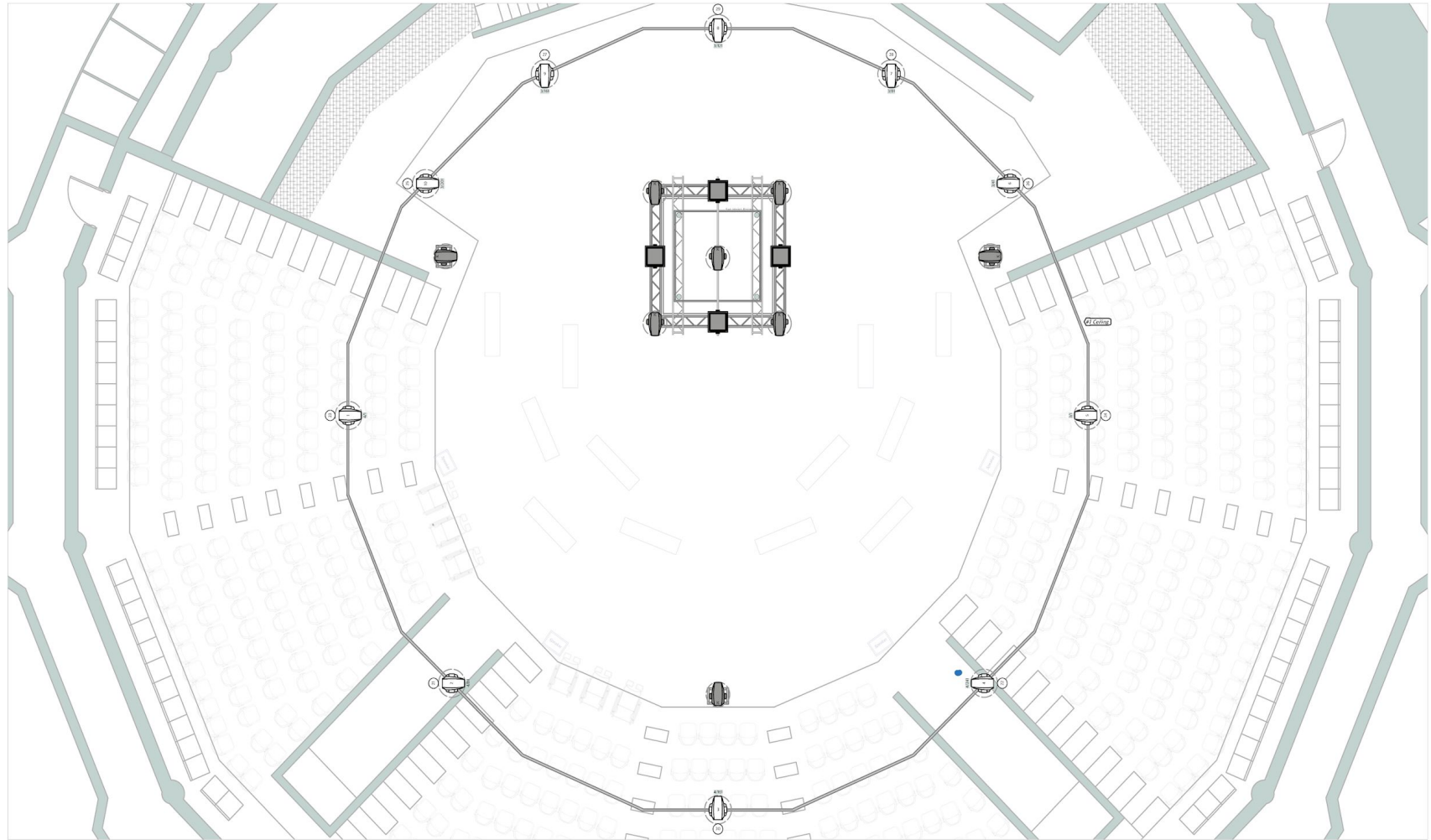
국립극장 하늘극장
서울 중구 장충단로 59 하늘극장

Lighting Drawing



<p>Light</p> <p>MinuitUne_IVL Carre 125W_4EA (19x4)</p>	<p>KEY</p> <p><i>Moving Light</i></p> <p>Elation_Monet Profile 1400W_10EA (42.8x32)</p> <p>Ayrton_Khamsin Profile 1150W_8EA (39.8x32)</p> <p><i>Device</i></p> <p>Antari_Z1200 @1300W_1EA</p> <p>Antari_Z390 Fazer @1450W_1EA</p>	<p>LEGEND</p> <p>Barn Door</p> <p>Color</p> <p>Purpose</p> <p>Iris</p> <p>Template</p> <p>Unit Number</p> <p>Channel</p> <p>Port:Address</p> <p>Fixture</p>	<p>NOTE</p> <ul style="list-style-type: none"> - 안전에 유의하여 작업 부탁드립니다. - 트러스의 하중은 조정장비 하중만 계산되었습니다. - Monet Profile은 극장 상부 기본 셋업되었는 라이트를 사용합니다. 또한 Address 는 현장셋팅 컨디션을 유지합니다. - IVL Carre : Mode 2 (45ch) - Khamsin_Profile : Extended Mode 	<p>국립극장 하늘극장 서울 중구 장충단로 59 하늘극장</p>	<p>LIGHTING DESIGNER 이상민 ism564@naver.com 010-3393-1273</p> <p>DIRECTED BY TECHNICAL DIRECTED BY SET DESIGNED BY SOUND DESIGNED BY</p> <p>아원민 하범수 신규영 최윤영</p> <p>SCALE NONE SCALE DWG. SHOWING DATE 2022.12.16-17 SET-UP DATE 2022.12.13-15 REV. 2022.12.05 DRAFTED BY 이상민</p> <p>3 OF 4</p> <p>LIGHTING PLOT Section</p>
--	--	--	---	---	--

Lighting Drawing

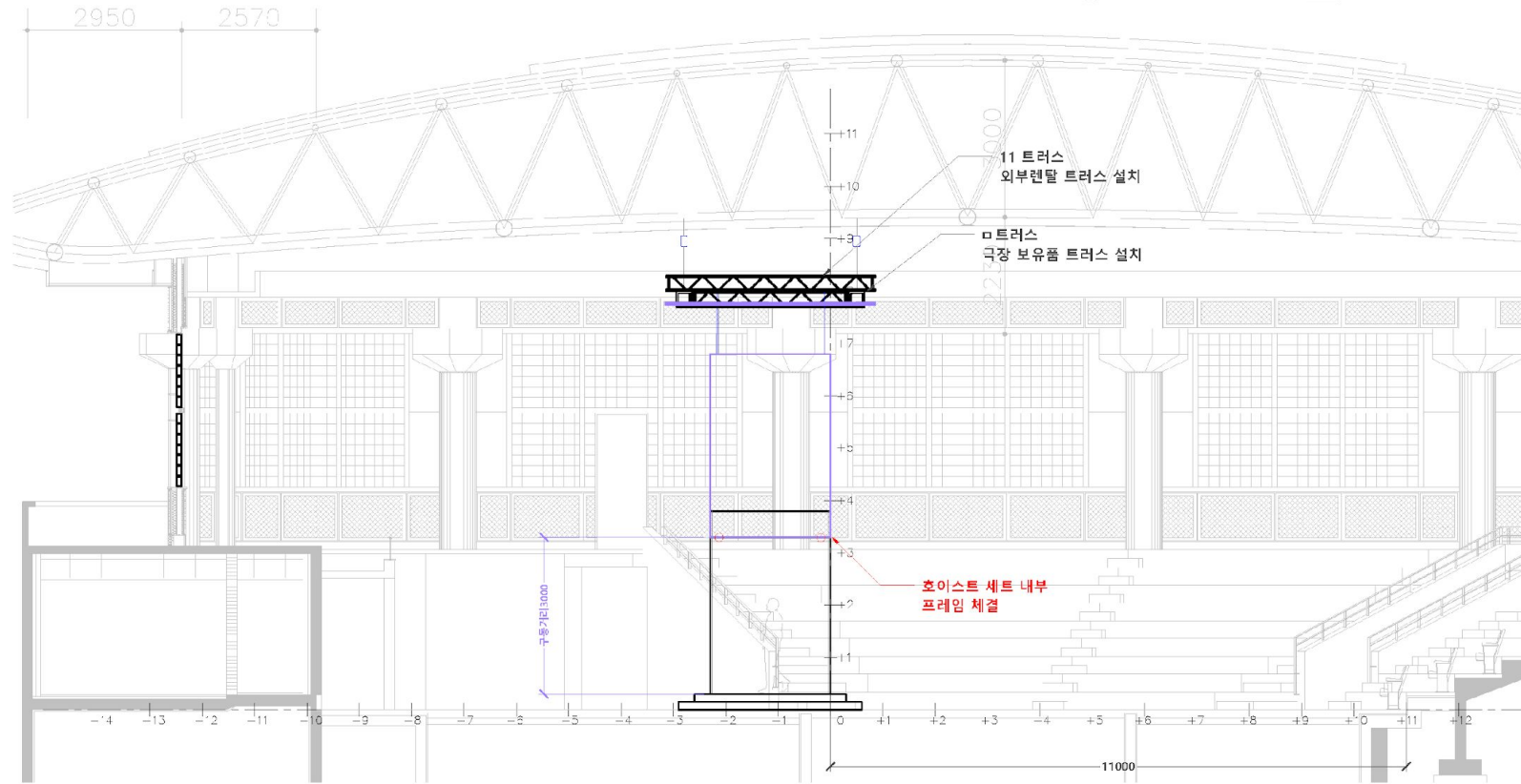


<p>Light</p> <p>MinuitUne_IVL Carre 125W_4EA (19.9x2)</p>	<p>KEY</p> <p>Moving Light</p> <p>Elation_Monet Profile 1400W_10EA (42.6x42)</p> <p>Ayrton_Khamsin Profile 1150W_8EA (39.9x42)</p>	<p>Device</p> <p>Antari_Z1200 @1300W_1EA</p> <p>Antari_Z390 Fazer @1450W_1EA</p>	<p>LEGEND</p> <p>Barn Door L201 TOP Color Purpose Iris Template Unit Number Channel Port:Address Fixture</p>	<p>NOTE</p> <ul style="list-style-type: none"> - 안전에 유의하여 작업 부탁드립니다. - 트러스의 하중은 조정장비 하중만 계산되었습니다. - Monet Profile은 극장 상부 기본 셋업되어있는 라이트를 사용합니다. 또한 Address 는 현장셋팅 컨디션을 유지합니다. - IVL Carre : Mode 2 (45ch) - Khamsin_Profile : Extended Mode 	<p>LIGHTING DESIGNER 이상민 lmspd4@naver.com 010-3383-1273</p> <p>DIRECTED BY TECHNICAL DIRECTED BY SET DESIGNED BY SOUND DESIGNED BY</p> <p>SCALE: NONE SCALE DWG. NO. 4 OF 4</p> <p>LIGHTING PLOT Ceiling</p> <p>이현민 하원수 안태영 하원성</p> <p>극립극장 하늘극장 서울 중구 정충단로 59 하늘극장</p>
--	--	---	---	--	---

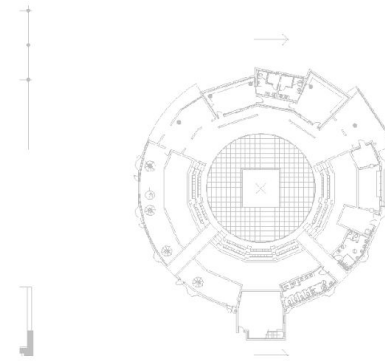
Stage Drawing

NOTE

- * 맨스플로어: 극장보유품 사용
- * 극장 보유 호이스트 사용하여 트러스 가설
- * 객석 무대 위 별도 설치 (대어품)
- * 객석 수 미정 (협의중)

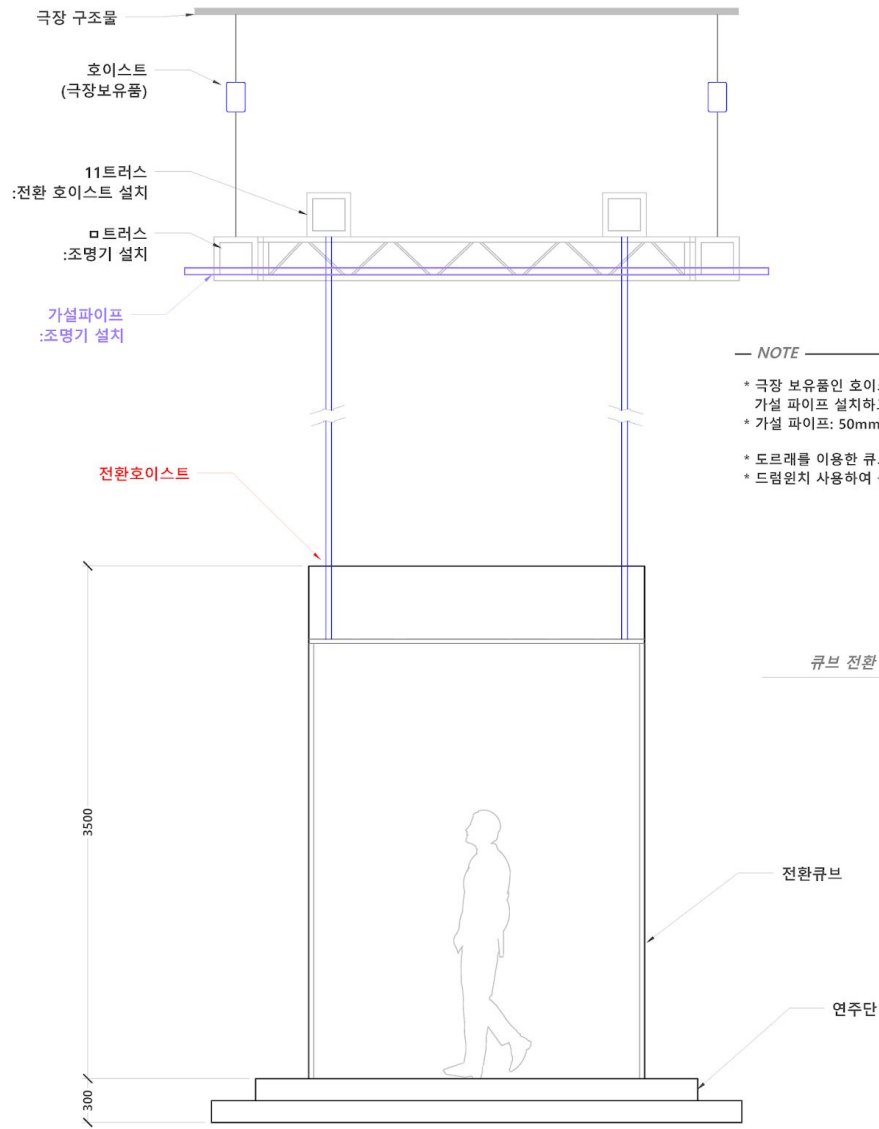


01 단면도 1/80



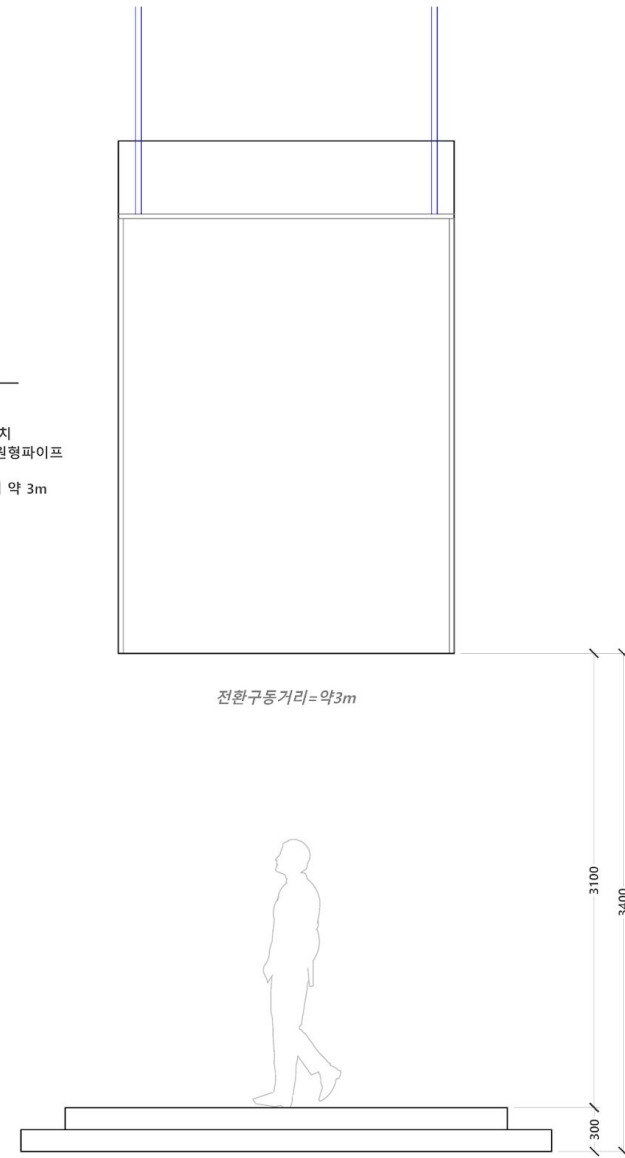
PRODUCTION TITLE	
2022 이현민 신작 <Juxtaposition of Macro Cosmos>	
PRODUCTION	이현민
VENUE	국립극장 하늘극장
LOAD IN DATE	2022/12/13
DIRECTED BY	이현민
SET DESIGNED BY	신나경
ASST. SET DESIGNED BY	---
TECHNICAL DESIGNED BY	---
DRAWN BY	신나경
DWN DATE	2022-11-27
FILE NAME	---
UNIT NAME	단면도
SHEET NO.	----
	

Stage Drawing



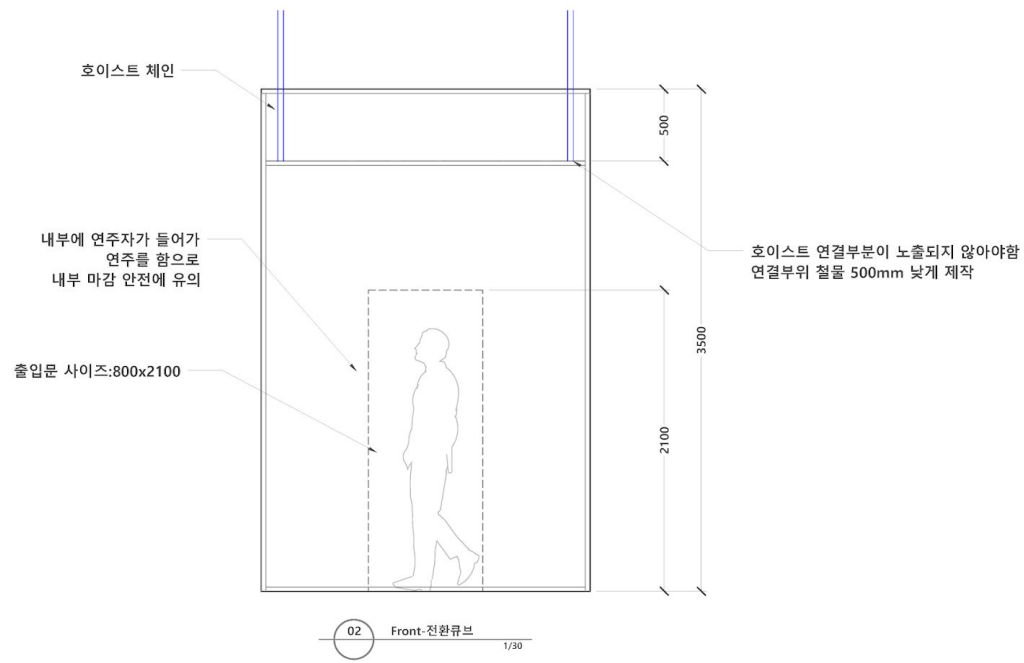
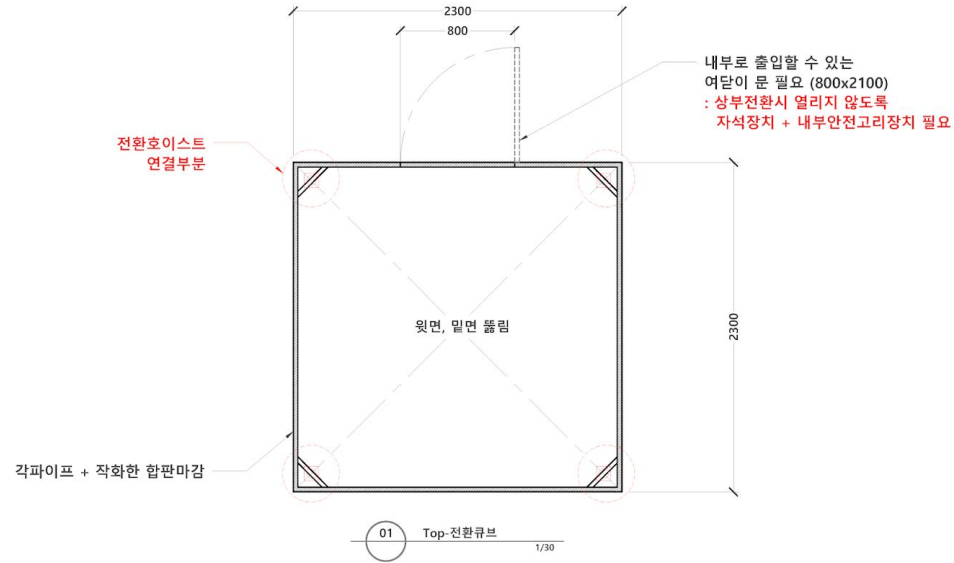
- NOTE —
- * 극장 보유품인 호이스트를 이용하여 가설 파이프 설치하고 도르래 연결설치
 - * 가설 파이프: 50mm 각파이프 또는 원형파이프
 - * 도르래를 이용한 큐브 전환: 구동거리 약 3m
 - * 드릴원치 사용하여 공연중 전환

큐브 전환 →

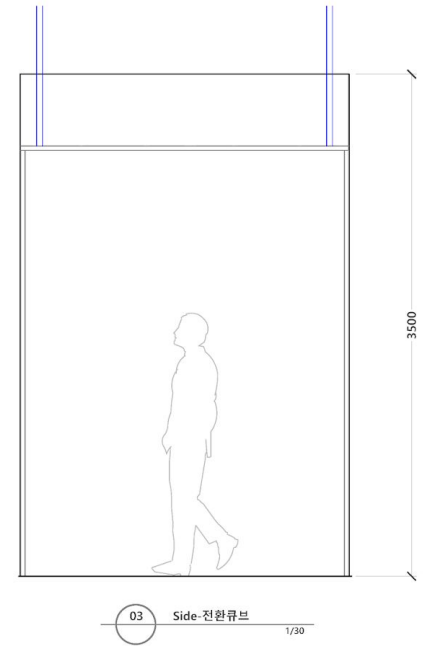


PRODUCTION TITLE	
2022 이현민 신작 <Juxtaposition of Macro Cosmos>	
PRODUCTION	이현민
VENUE	국립극장 하늘극장
LOAD IN DATE	2022/12/13
DIRECTED BY	이현민
SET DESIGNED BY	신나경
ASST. SET DESIGNED BY	---
TECHNICAL DESIGNED BY	---
DRAWN BY	신나경
DWG DATE	2022-11-27
FILE NAME	---
UNIT NAME	전환큐브+연주단
SHEET NO.	---

Stage Drawing

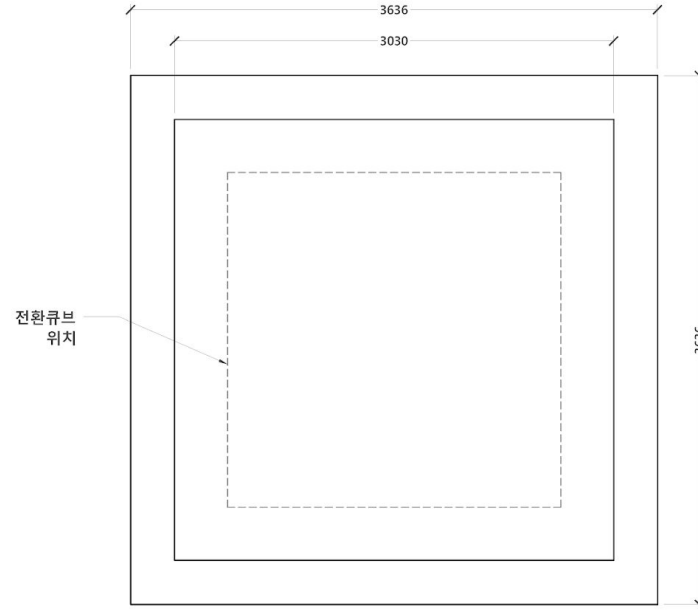


- NOTE
- * 각파이프 위 작화 합판 부착
 - * 4개의 옆면은 합판마감, 위-아래 면은 마감 X
 - * 외부는 지정작화마감 / 내부는 검정작화마감
 - * 뒷면에는 출입이 가능한 여닫이 문 필요 (문 합판부분도 동일한 작화마감)
 - * 전환용 호이스트 설치를 위해서 큐브 내부에 연결 철물 필요
 - * 연주자가 큐브 내부에서 약 20-30분 동안 연주를 진행하므로 내부 마감이 안전하게 처리되어야함
 - * 내부 한 쪽 벽면에는 악보와 보편등 부착예정

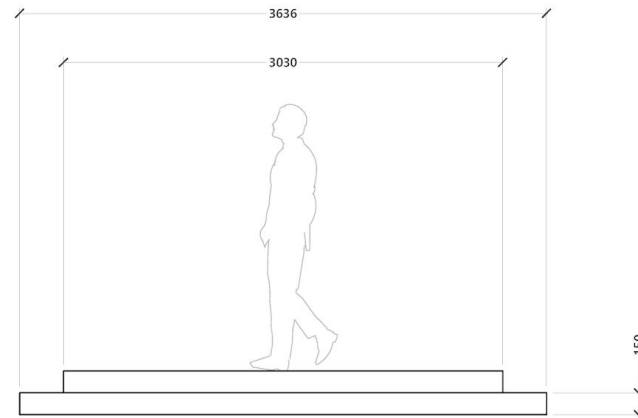


PRODUCTION TITLE	2022 이현민 신작 <Juxtaposition of Macro Cosmos>
PRODUCTION	이현민
VENUE	국립극장 하늘극장
LOAD IN DATE	2022/12/13
DIRECTED BY	이현민
SET DESIGNED BY	신나경
ASST. SET DESIGNED BY	---
TECHNICAL DESIGNED BY	---
DRAWN BY	신나경
DWG DATE	2022-11-27
FILE NAME	---
UNIT NAME	전환큐브
SHEET NO.	----

Stage Drawing



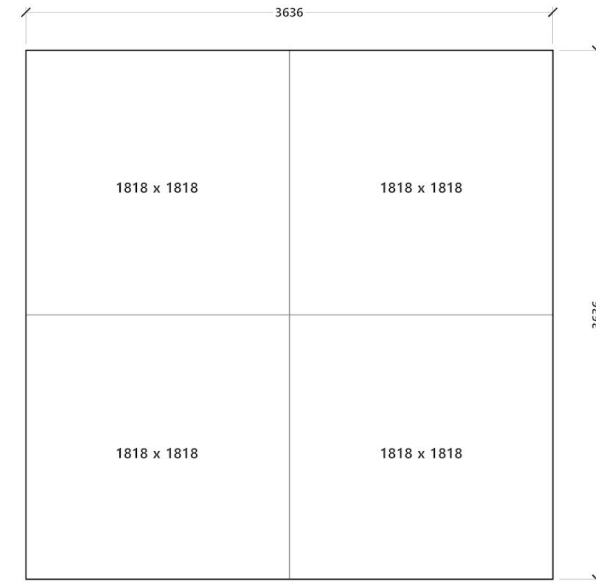
01 Top-연주단 1/30



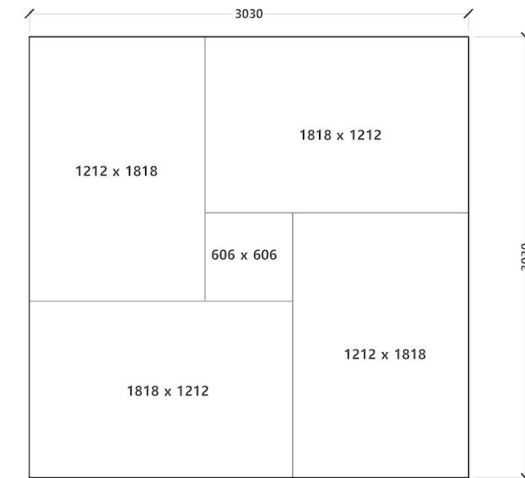
02 Front-연주단 1/30

— NOTE —

- * 하부고정세트
- * 극장보유 덧마루 사용
- * 기본틀 구조에 검정색 하이그로시 합판 마감
- * 극장보유덧마루
 - 1818 x 1818 4개
 - 1212 x 1818 4개
 - 606 x 606 1개



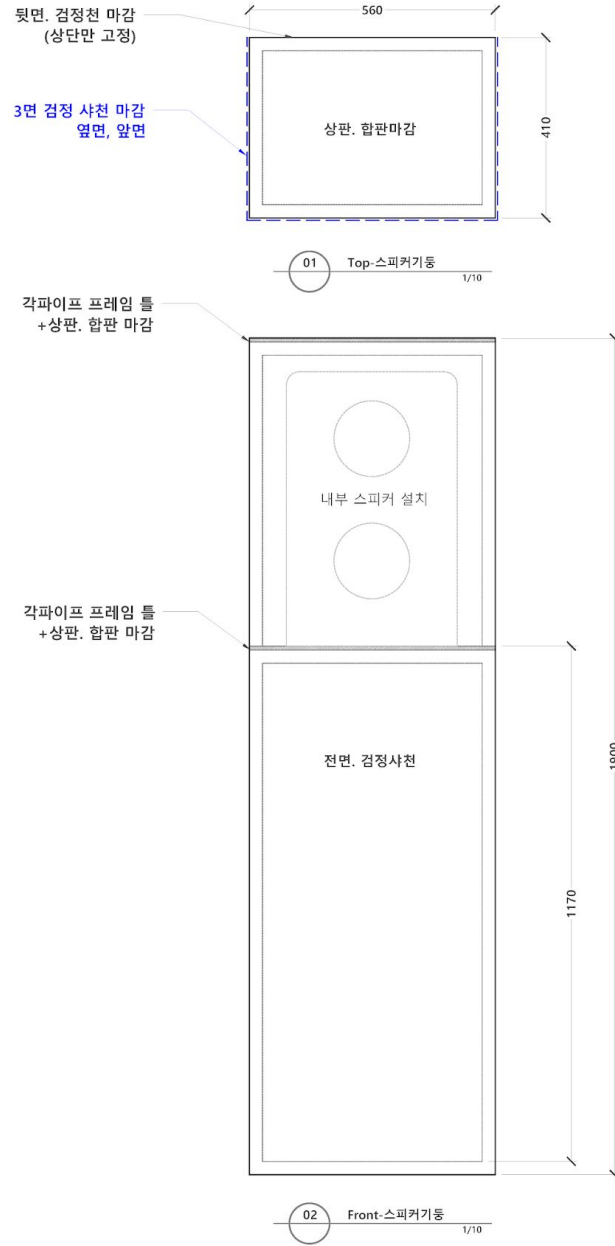
01 Top-연주단-1단 덧마루 구성 1/30



01 Top-연주단-2단 덧마루 구성 1/30

PRODUCTION TITLE	2022 이현민 신작 <Juxtaposition of Macro Cosmos>
PRODUCTION	이현민
VENUE	국립극장 하늘극장
LOAD IN DATE	2022/12/13
DIRECTED BY	이현민
SET DESIGNED BY	신나경
ASST. SET DESIGNED BY	---
TECHNICAL DESIGNED BY	---
DRAWN BY	신나경
DWG DATE	2022-11-27
FILE NAME	---
UNIT NAME	연주단
SHEET NO.	----

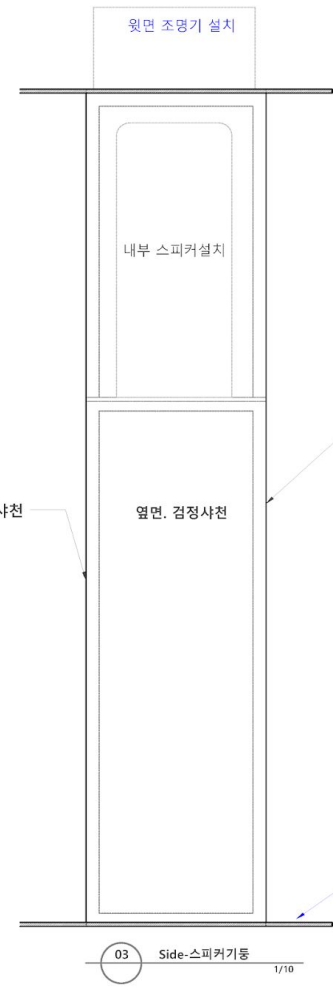
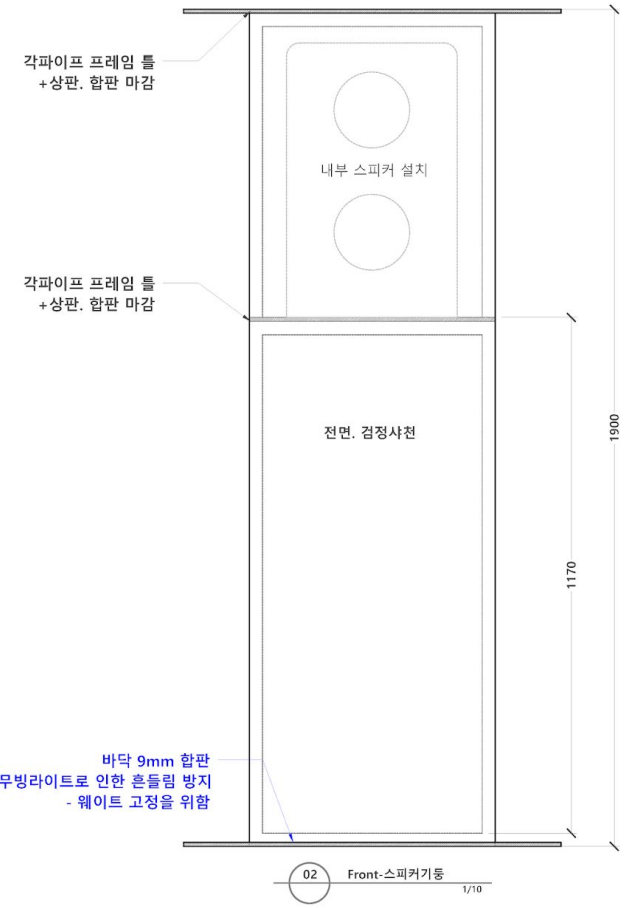
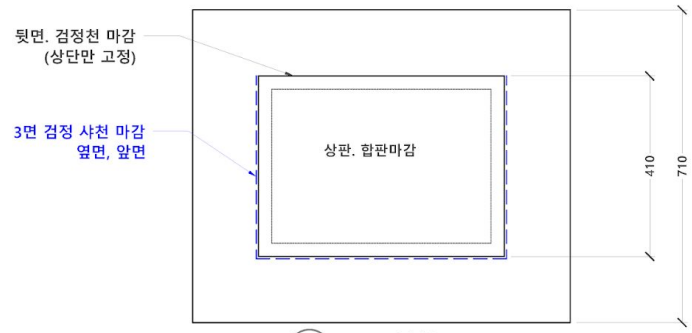
Stage Drawing



- NOTE —
- * 하부고정세트
 - * 수량: 4개
 - * 기본 각파이프 프레임 틀 + 상판 합판 + 3면 사천마감
 - * 뒷면은 검정천 마감하되 장비 설치가 가능하도록 상단만 고정
 - * 상판 위에 스피커 및 조명기를 올릴 수 있어야함 (합판 두께 조율가능)
 - * 색상, 전체 검정색

PRODUCTION TITLE	
2022 이현민 신작 <Juxtaposition of Macro Cosmos>	
PRODUCTION	이현민
VENUE	국립극장 하늘극장
LOAD IN DATE	2022/12/13
DIRECTED BY	이현민
SET DESIGNED BY	신나경
ASST. SET DESIGNED BY	---
TECHNICAL DESIGNED BY	---
DRAWN BY	신나경
DWG DATE	2022-11-27
FILE NAME	---
UNIT NAME	스피커기둥
SHEET NO.	----

Stage Drawing



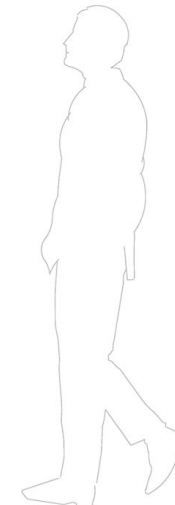
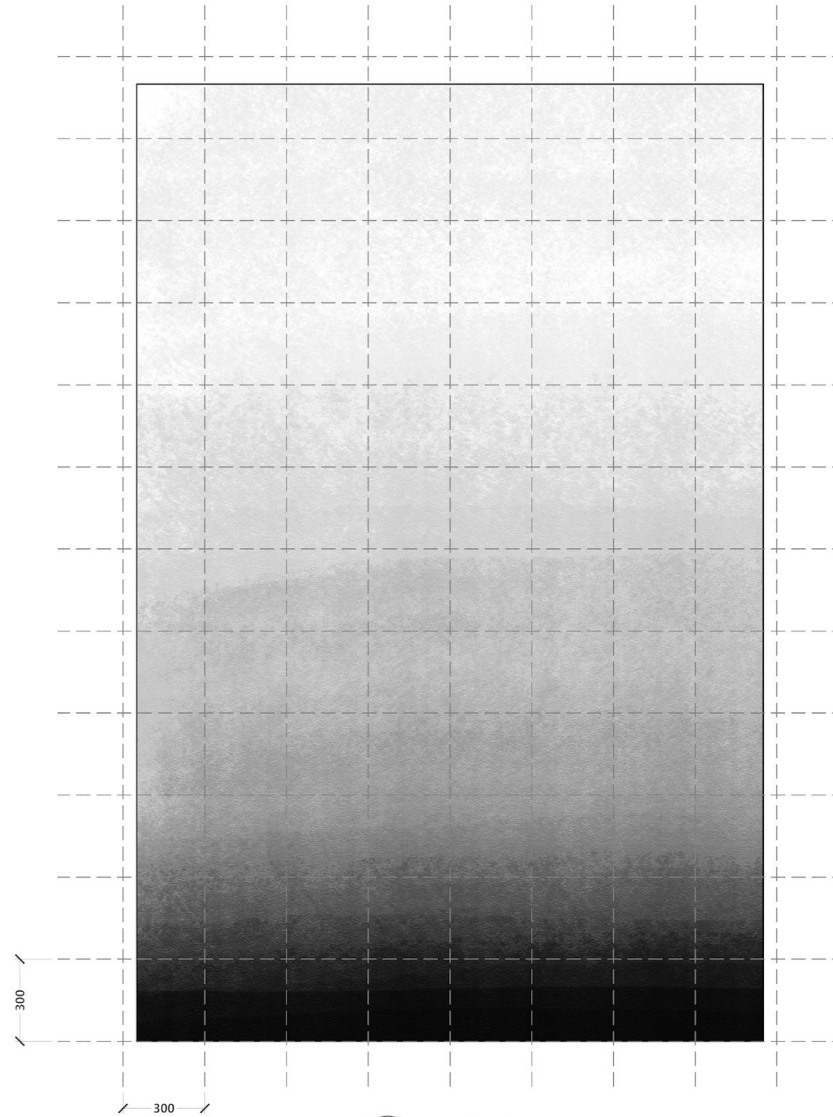
- NOTE —
- * 하부 고정세트
 - * 수량: 3개
 - * 기본 각파이프 프레임 틀 + 상판 합판 + 3면 사천마감
 - * 상판과 바닥면은 기둥 사이즈보다 사방 150mm 크게 제작
-> 조명기 회전시 기둥의 흔들림과 기울어짐 방지
 - * 뒷면은 검정천 마감하되 장비 설치가 가능하도록 상단만 고정
 - * 상판 위에 스피커 및 조명기를 올릴 수 있어야함 (합판 두께 조율가능)

PRODUCTION TITLE	
* 색상. 전체 검정색	
2022 이현민 신작 <Juxtaposition of Macro Cosmos>	
PRODUCTION	이현민
VENUE	국립극장 하늘극장
LOAD IN DATE	2022/12/13
DIRECTED BY	이현민
SET DESIGNED BY	신나경
ASST. SET DESIGNED BY	---
TECHNICAL DESIGNED BY	---
DRAWN BY	신나경
DWG DATE	2022-11-27
FILE NAME	---
UNIT NAME	스피커기둥
SHEET NO.	----

Stage Drawing

— NOTE —

- * 수정페인트 작화 후 반광코팅
- * 4명 동일한 작화



01 Front-작화도면 1/16

PRODUCTION TITLE	
2022 이현민 신작 <Juxtaposition of Macro Cosmos>	
PRODUCTION	이현민
VENUE	국립극장 하늘극장
LOAD IN DATE	2022/12/13
DIRECTED BY	이현민
SET DESIGNED BY	신나경
ASST. SET DESIGNED BY	---
TECHNICAL DESIGNED BY	---
DRAWN BY	신나경
DWG DATE	2022-11-27
FILE NAME	---
UNIT NAME	진원큐브+연주단
SHEET NO.	----
	

Program Picture

